

Victoria Miro

40 *years*

6 JUNE–1 AUGUST 2025

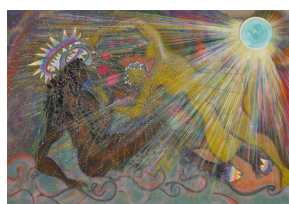
This special exhibition celebrates the extraordinary artists who have shaped the gallery since its founding in 1985. On view across both our galleries and waterside garden, this expansive exhibition features works by gallery artists, including new paintings, sculptures and installations created for this occasion, alongside a curated selection of recent and historical works.

We are committed to making your visit as enjoyable and accessible as possible:

Gallery I: The ground floor and waterside garden are fully accessible. Please note that the upper floor is not wheelchair accessible, as there is no lift. Access to the upper floor is via the stairs located at the building's entrance, beside the bookshop.

Gallery II: Accessible via the waterside garden. The entrance is located at the far right corner of the stone terrace. A lift is available to the exhibition spaces on the upper and lower floors.

GALLERY I–LOWER



Chris Ofili

*watched over by the wind,
river meets forest in the light of
the sun*, 2020–25

Oil and charcoal on linen
160.1 x 230.5 cm
63 x 90 3/4 in



Njideka Akunyili Crosby

Na Parlour (In the Parlour), 2025

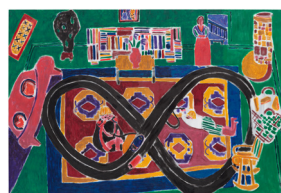
Acrylic, coloured pencil, and
transfers on paper
212 x 258.5 cm
83 1/2 x 101 3/4 in



Sarah Sze

In Space Things Float, 2025

Oil paint, acrylic paint, acrylic
polymers, archival paper, ink,
Dibond, aluminum, and wood
262.3 x 196.2 x 7.6 cm
103 1/4 x 77 1/4 x 3 in



Tal R

Racetrack, 2024

Oil on canvas
137 x 200 cm
54 x 78 3/4 in



Hernan Bas

The Overachiever, 2025

Acrylic and water based
oil on linen
213.4 x 182.9 cm
84 x 72 in



Wangechi Mutu

Sentinel VII, 2024

Red soil, wood, paper pulp,
cowries, porcelain, synthetic hair,
dead base rock, and bone
247 x 63 x 84 cm
97 1/4 x 24 3/4 x 33 1/8 in

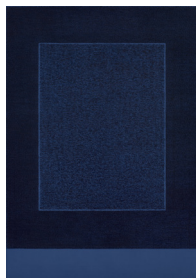
Victoria Miro

40 *years*

GALLERY I—UPPER



Ali Banisadr
The Flood, 2025
Oil on linen
71 x 91.5 cm
28 x 36 in



Idris Khan
The answer steps soundless, 2025
Oil based ink on gesso, on aluminium
252 x 175 cm
99 1/4 x 68 7/8 in



Adriana Varejão
Modernist Tile #1, 2025
Oil and plaster on canvas
164 x 164 cm
64 5/8 x 64 5/8 in



Secundino Hernández
Celebration, 2025
Acrylic, alkyd, and oil on linen
259 x 310 cm
102 x 122 in



Maria Nepomuceno
Sant'Angelo - Lapa, 2024
Murano glass, rope, found object, clay, and beads
191 x 225 x 216 cm
75 1/4 x 88 5/8 x 85 in

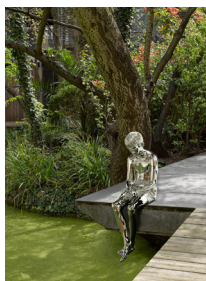


Jorge Pardo
Untitled, 2017
3 mm coloured PETG, aluminium, and steel fixtures
123.5 x 86.5 x 86.5 cm
48 5/8 x 34 1/8 x 34 1/8 in



Doug Aitken
Vision, 2016
High-density foam, steel, mirror, and acid-etched mirror
147.3 x 221 x 35.6 cm
58 x 87 1/8 x 14 1/8 in

WATERSIDE GARDEN



Elmgreen & Dragset
Robert (Reflecting), 2024
Mirror polished stainless steel
123 x 37 x 73 cm
48 3/8 x 14 5/8 x 28 3/4 in

Victoria Miro

40 years

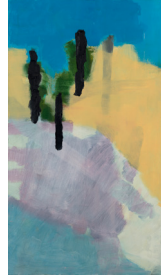
GALLERY II—UPPER



Milton Avery
Lavender Girl, 1963
Oil on canvasboard
76.2 x 61 cm
30 x 24 in



Doron Langberg
Lovers, 2024
Oil on linen
203.2 x 243.8 cm
80 x 96 in



Ilse D'Hollander
Untitled, 1995
Oil on canvas
120 x 70 cm
47 1/4 x 27 1/2 in



Flora Yukhnovich
Out with Lanterns, Looking for Myself, 2025
Oil on linen
170 x 140 cm
66 7/8 x 55 1/8 in



María Berrío
To Weigh the Stars Above Us, 2025
Collage with Japanese papers
and watercolor paint on linen
183.2 x 229.1 cm
72 1/8 x 90 1/4 in



Chantal Joffe
Self-Portrait in a Straw Hat, 2025
Oil on board
215 x 152 cm
84 5/8 x 59 7/8 in



Alice Neel
Ivan Karp, 1965
Oil on canvas
101.6 x 76.2 cm
40 x 30 in



Paula Rego
The Cake Woman, 2004
Pastel on paper on aluminium
150 x 150 cm
59 x 59 in



Conrad Shawcross
Manifold study (Major Seventh)
15:8 [chromatic], 2025
Painted bronze
120 x 44.5 x 44.5 cm
47 1/4 x 17 1/2 x 17 1/2 in



Hedda Sterne
Pyramids, 1984
Acrylic on canvas
182.9 x 137.2 cm
72 x 54 in



Celia Paul
Kate in a Starry Landscape, 2025
Oil on canvas
81.3 x 76.2 cm
32 x 30 in

Victoria Miro

40 years

GALLERY II—LOWER



Verne Dawson

With Two Birds, 2015–24

Oil on linen
44.5 x 74.9 cm
17 1/2 x 29 1/2 in



David Harrison

Cernunnos Kills the Huntsman, 2025

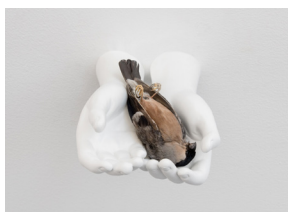
Oil on panel
70 x 85.5 cm
27 1/2 x 33 5/8 in



Inka Essenhigh

Roses, 2025

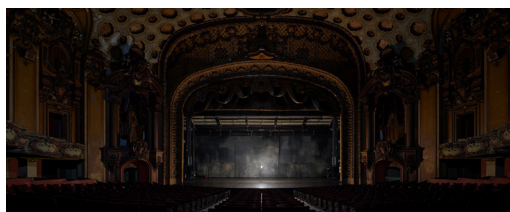
Enamel on canvas
81.3 x 71.1 cm
32 x 28 in



Elmgreen & Dragset

Still Life (Bullfinch), 2024

Bronze, lacquer, and
animatronic bird
7 x 14 x 23 cm
2 3/4 x 5 1/2 x 9 in



Stan Douglas

Ghostlight, 2024

Inkjet print mounted on Dibond aluminium
122.2 x 304.8 cm
48 1/8 x 120 in



Kudzanai-Violet Hwami

a mother's hymn, 2025

Oil, acrylic, and graphite
on linen
180 x 146 cm
70 7/8 x 57 1/2 in



Grayson Perry

*Forty Years of Art Trends in
a Palatable Form*, 2025

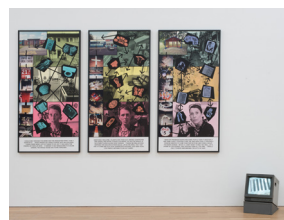
Glazed ceramic
69 x 37 x 37 cm
27 1/8 x 14 5/8 x 14 5/8 in



Isaac Julien

*Intimidade crítica / Critical
Intimacy (Lina Bo Bardi - A
Marvellous Entanglement)*, 2019

Inkjet print on Ilford Gold Fibre Gloss
90 x 110 cm
35 3/8 x 43 1/4 in



Stephen Willats

Starting Afresh With A Blank Canvas,
August 2007–March 2008, 2007–08

Photographic prints, photographic dye,
acrylic paint, ink on card, and DVD film
Three panels. Each: 155 x 78 cm
61 1/8 x 30 3/4 in

Victoria Miro

40 years

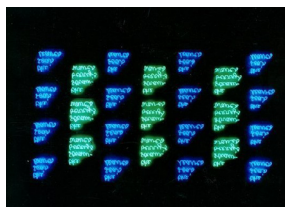
GALLERY II—LOWER



Alex Hartley

All of us just dust, 2025

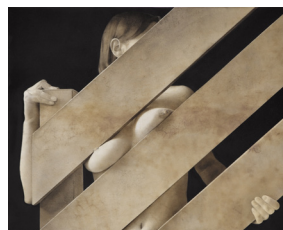
Solar photovoltaic panels, solar thermal tubes, Unistrut, hand-dyed giclee photographic prints, acrylic paint, resin, and rock
275 x 300 x 100 cm
108 1/4 x 118 1/8 x 39 3/8 in



Ian Hamilton Finlay

The Seas Leaves..., 1990

Neon, glass, and perspex
183 x 329 x 3.5 cm
72 1/8 x 129 1/2 x 1 3/8 in



Saskia Colwell

Downstairs, 2025

Charcoal on vellum
60 x 75 cm
23 5/8 x 29 1/2 in



Jules de Balincourt

Claudia Studio Visit, 2025

Oil on panel
61 x 50.8 cm
24 x 20 in



John Kørner

Pink Corridor, 2025

Acrylic on canvas
180 x 240 cm
70 7/8 x 94 1/2 in



Do Ho Suh

Spectators, 2023

Pastel on paper
155 x 102.5 cm
61 x 40 3/8 in



Christian Holstad

Potter's Field Flowers (Modular Vase), 2025

Glazed ceramic
Variable dimensions



NS Harsha

A birth and its chanced panicle, 2024

Acrylic on canvas
137 x 107 cm
54 x 42 1/8 in