

Paula Rego

Story Line

16 APRIL–23 MAY 2026

Victoria Miro · 16 Wharf Road · London N1 7RW

GALLERY I



Concha, c.1970
Ink and wash on paper
24 x 33 cm
9 1/2 x 13 in



Assassins, 1957-58
Pen and ink on paper
20.5 x 28 cm
8 1/8 x 11 in



Maenads, 1958-59
Pen and ink on paper
27 x 34 cm
10 5/8 x 13 3/8 in



Unknown Title, c.1973
Graphite on paper
52 x 45 cm
20 1/2 x 17 3/4 in



Shakespeare's Globe, c.1970
Pen and ink on paper
24.4 x 33 cm
9 5/8 x 13 in



Boy and his Devil, 1955
Pen on paper
38 x 28 cm
15 x 11 in



Wrestling, 1967
Pencil on paper
29.5 x 42 cm
11 5/8 x 16 1/2 in



Swineherd, c.1969
Ink and wash on paper
24 x 33 cm
9 1/2 x 13 in



Study for The Soldier's Daughter, 1987
Indian ink on paper
38 x 28 cm
15 x 11 in



Study for The Cadet and His Sister, 1988
Ink and wash on paper
34 x 23.5 cm
13 3/8 x 9 1/4 in



Study for Girl and Dog, 1986
Pen and ink on paper
29.5 x 42 cm
11 5/8 x 16 1/2 in



Study for The Maids, 1986
Ink and wash on paper
26 x 39 cm
10 1/4 x 15 3/8 in



Study for Policeman's Daughter, 1987
Pen on paper
38 x 29 cm
15 x 11 3/8 in



The Tree Nymph, 1986
Acrylic on paper
111 x 75.5 cm
43 3/4 x 29 3/4 in



Girl and Dog with Nuns, 1986
Acrylic on paper
111 x 75.5 cm
43 3/4 x 29 3/4 in



Study for Sleeping, 1986
Pencil on paper
29.7 x 42 cm
11 3/4 x 16 1/2 in



Study for Snare, 1987
Pen and ink on paper
29.4 x 41.6 cm
11 5/8 x 16 3/8 in



Study for Prey, c.1986
Charcoal on paper
29.5 x 34 cm
11 5/8 x 13 3/8 in



Study for The Rehearsal, 1989
Pencil on paper
42 x 29.7 cm
16 1/2 x 11 3/4 in



Love, c.1987
Pencil and ink on paper
59.5 x 42 cm
23 3/8 x 16 1/2 in



Girls with Parrot, 1986
Ink and wash on paper
29.7 x 42 cm
11 3/4 x 16 1/2 in



Study for The Dance II, 1988
Charcoal on paper
29.5 x 42 cm
11 5/8 x 16 1/2 in



Study for the Legend of the Fire, 1997
Graphite on paper
41 x 29 cm
16 1/8 x 11 3/8 in



Study for the Legend of the Fire, 1997
Graphite on paper
42 x 30 cm
16 1/2 x 11 3/4 in



Study for the Legend of the Fire, 1997
Graphite on paper
41.5 x 29.2 cm
16 3/8 x 11 1/2 in



Study for The Wedding Guest, 1999
Pencil on paper
39.5 x 29 cm
15 1/2 x 11 3/8 in



Study for The Soldier's Daughter, 1987
Graphite on paper
42 x 59.5 cm
16 1/2 x 23 3/8 in



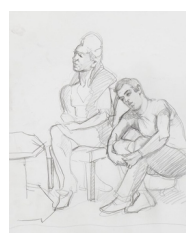
Study for Perch, 1998
Pencil on paper
43.5 x 41.5 cm
17 1/8 x 16 3/8 in



Study for 'Crivelli's Garden', Delilah, 1990
Pencil on paper
56 x 77 cm
22 1/8 x 30 1/4 in



Study for The Cell, 1997
Pencil on paper
42 x 59.4 cm
16 1/2 x 23 3/8 in



Study for Betrothal, 1999
Pencil on paper
59.3 x 42 cm
23 3/8 x 16 1/2 in



Study for Sleeper, 1994
Graphite on paper
29.7 x 42 cm
11 3/4 x 16 1/2 in



Study for Embarkation, 1992
Pencil on paper
29 x 36.3 cm
11 3/8 x 14 1/4 in



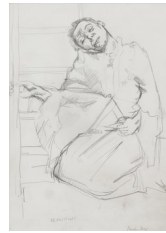
Study for Caritas, 1993
Pen, ink and watercolour on paper
27.5 x 31.5 cm
10 7/8 x 12 3/8 in



Life Study for the Return of The Native, 1993
Pencil on paper
29.5 x 42 cm
11 5/8 x 16 1/2 in



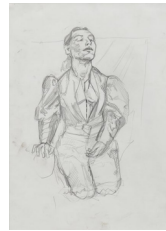
Study for The Artist in her Studio, 1993
Ink and wash on paper
29.7 x 42 cm
11 3/4 x 16 1/2 in



Study for Deposition, 1998
Pencil on paper
40.3 x 28.8 cm
15 7/8 x 11 3/8 in



Study for The White Cat, 1993
Pencil on paper
38 x 57 cm
15 x 22 1/2 in



Study for Girl with Gladioli AKA Reliquary, 1998
Pencil on paper
41 x 29 cm
16 1/8 x 11 3/8 in



Study for The Fitting, 1990
Graphite on paper
42 x 29.7 cm
16 1/2 x 11 3/4 in



Study for Meadow, 1996
Pencil on paper
42 x 29.5 cm
16 1/2 x 11 5/8 in



Study for Mary, 1999
Pencil on paper
34.3 x 33.4 cm
13 1/2 x 13 1/8 in



Study for Crivelli's Garden, 1990
Pencil on paper
42 x 29.7 cm
16 1/2 x 11 3/4 in



Study for The Ambassador of Jesus, 1997
Pencil on paper
38 x 27 cm
15 x 10 5/8 in



Study for Wide Sargasso Sea, 1991
Graphite on paper
42 x 29.7 cm
16 1/2 x 11 3/4 in



Study for The Cell, 1997
Pencil on paper
29.7 x 42 cm
11 3/4 x 16 1/2 in



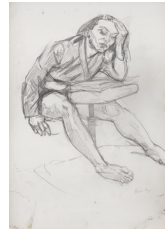
Study for Waiting for Food - Dog Woman, 1994
Graphite on paper
42 x 29.7 cm
16 1/2 x 11 3/4 in



Study for the Artist in her Studio, 1993
Pencil on paper
36.5 x 29.5 cm
14 3/8 x 11 5/8 in



Study for Untitled (Abortion Series), 1998
Pencil on paper
42 x 29.7 cm
16 1/2 x 11 3/4 in



Study for The Lesson, 1997
Pencil on paper
42 x 29.5 cm
16 1/2 x 11 5/8 in



Study for Jenufa, 1995
Pencil on paper
29.5 x 42 cm
11 5/8 x 16 1/2 in



Study for the Legend of the Fire, 1997
Graphite on paper
29.7 x 42.4 cm
11 3/4 x 16 3/4 in



Magdalene Reading, 1998
Pencil on paper
40.2 x 28.7 cm
15 7/8 x 11 1/4 in



Fig, 1969
Embroidered textile
20 x 30 x 76 cm
7 7/8 x 11 3/4 x 29 7/8 in

GALLERY II



Study for Time Past and Present, 1990-91
Pencil on paper
42 x 30 cm
16 1/2 x 11 3/4 in



Alone, 2010
Conté on paper
137 x 101 cm
54 x 39 3/4 in



Study for Germaine Greer, 1995
Graphite on paper
42 x 29.5 cm
16 1/2 x 11 5/8 in



War Rabbits, 2003
Ink on paper
30.5 x 22.5 cm
12 x 8 7/8 in



Pregnant Amelia, 1997
Pencil on paper
42 x 29.5 cm
16 1/2 x 11 5/8 in



Study for Jane Eyre, 2002
Pencil on paper
42 x 29.7 cm
16 1/2 x 11 3/4 in



Study for Annunciation, 2002
Pencil on paper
42 x 59.4 cm
16 1/2 x 23 3/8 in



Study for Crying, 2001
Pencil on paper
59.3 x 42 cm
23 3/8 x 16 1/2 in



Princess, 2015
Pencil on paper
75 x 53.8 cm
29 1/2 x 21 1/8 in



Recruit and Comandante, 2000
Pencil on paper
50.5 x 37.8 cm
19 7/8 x 14 7/8 in



Chicken Men on the Beach at Estoril, 2004
Ink and watercolour on paper
42 x 59.2 cm
16 1/2 x 23 1/4 in



Study for Cake Woman, 2004
Pencil on paper
42 x 29.7 cm
16 1/2 x 11 3/4 in



Misericordia I (Pedro Galdos), 2001
Pen, ink and watercolour on paper
41.9 x 59.4 cm
16 1/2 x 23 3/8 in



Study for After Hogarth II, 2000
Pencil on paper
29.7 x 42 cm
11 3/4 x 16 1/2 in



Misericordia IV, 2001
Pen, ink and watercolour on paper
41.9 x 59.4 cm
16 1/2 x 23 3/8 in



Study for Possession, 2004
Pencil on paper
59.5 x 42 cm
23 3/8 x 16 1/2 in



Feeding, 2001
Ink and wash on paper
42 x 59 cm
16 1/2 x 23 1/4 in



Stone Soup, 2012
Ink and wash on paper
50.9 x 36 cm
20 x 14 1/8 in



Holding, 2001
Watercolour on paper
42 x 59 cm
16 1/2 x 23 1/4 in



Don't Leave Me II, 2000
Wax Crayon on Mylar
74.6 x 54.7 cm
29 3/8 x 21 1/2 in



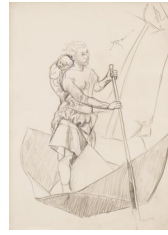
Nude, 2001
Pastel on paper
102.6 x 76.6 cm
40 3/8 x 30 1/8 in



Study for The Interrogator's Garden, 2000
Pastel on paper
101.7 x 67 cm
40 x 26 3/8 in



Caritas, 2009
Conté on paper
118.5 x 71 cm
46 5/8 x 28 in



Study for St Christina, 2009
Pencil on paper
76.5 x 56.5 cm
30 1/8 x 22 1/4 in



Waiting, 2000
Pencil and Conté on paper
84 x 59.5 cm
33 1/8 x 23 3/8 in



Nativity II, 2002
Watercolour and ink on paper
21 x 29 cm
8 1/4 x 11 3/8 in



Jane Eyre, 2002
Pastel on paper
80 x 57 cm
31 1/2 x 22 1/2 in



The Visitation, 2002
Watercolour and ink on paper
21 x 29 cm
8 1/4 x 11 3/8 in



Company, 2000
Pencil on paper
118 x 83 cm
46 1/2 x 32 5/8 in



Pietà I, 2002
Watercolour and ink on paper
21 x 29 cm
8 1/4 x 11 3/8 in



Rabbit, 2003
Papier Maché and cloth on
aluminium armitage
59 x 46 x 49 cm
23 1/4 x 18 1/8 x 19 1/4 in



Lamentation at the Foot of The Cross, 2002
Watercolour and ink on paper
21 x 29 cm
8 1/4 x 11 3/8 in



Pietà III, 2002
Watercolour and ink on paper
21 x 29 cm
8 1/4 x 11 3/8 in



Study for Depression series, Guardian Wrapping Paper, 2007
Ink and watercolour on paper
37.5 x 22.5 cm
14 3/4 x 8 7/8 in



Annunciation, 2002
Watercolour and ink on paper
21 x 29 cm
8 1/4 x 11 3/8 in



She Doesn't Want It, 2007
Graphite and conté pencil on paper
137 x 102 cm
54 x 40 1/8 in



Pietà IV, 2002
Watercolour and ink on paper
21 x 29 cm
8 1/4 x 11 3/8 in



Purification of the Temple, 2002
Watercolour and ink on paper
21 x 29 cm
8 1/4 x 11 3/8 in



Massacre of the Innocents I, 2002
Watercolour and ink on paper
21 x 29 cm
8 1/4 x 11 3/8 in



Adoration, 2002
Watercolour and ink on paper
21 x 29 cm
8 1/4 x 11 3/8 in



Pietà, 2002
Pastel on paper
53.5 x 51.5 cm
21 5/8 x 20 7/8 in



Cringe II, 2000
Wax Crayon on Mylar
74.6 x 54.7 cm
29 3/8 x 21 1/2 in



Study for Convulsion II, 2000
Pastel on paper
75 x 56 cm
29 1/2 x 22 1/8 in



Waiting II, 2000
Pencil and Conté on paper
84 x 59.5 cm
33 1/8 x 23 3/8 in



Depression No. 7, 2007
Pastel on paper
101.5 x 68.5 cm
40 x 27 in



Young Mr Rochester, 2000
Pastel on paper mounted on
aluminium
69 x 49.5 cm
27 1/8 x 19 1/2 in



Self Portrait II, 2017
Pastel on Paper
59 x 42 cm
23 1/4 x 16 1/2 in



Luisa Receives the Letter, 2015
Pencil and pastel on paper on board
76.5 x 56 cm
30 1/8 x 22 1/8 in



Sick of it All, 2013
Watercolour on paper
50.2 x 35.6 cm
19 3/4 x 14 1/8 in



Rape, 2009
Pastel, conté and charcoal on paper
125.1 x 85.4 cm
49 1/4 x 33 5/8 in