

Alice Neel: *There's Still Another I See*

11 OCTOBER–12 NOVEMBER 2022

Victoria Miro · 16 Wharf Road · London N1 7RW

VICTORIA MIRO GALLERY II



My Mother, 1952
Oil on canvas
91.1 x 73.7 cm
35 7/8 x 29 1/8 in



My Mother, 1930
Oil on canvas
76.2 x 66 cm
30 x 26 in



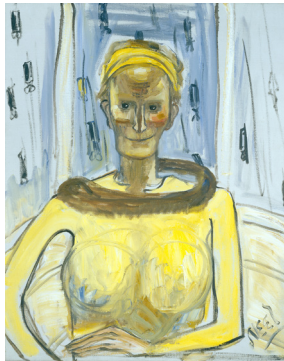
Georgie Neel, 1947
Oil on canvas
86.4 x 56.4 cm
34 1/8 x 22 1/4 in



Georgie Neel, 1955
Oil on canvas
92 x 65.8 cm
36 1/4 x 25 7/8 in



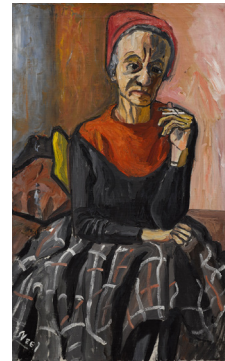
Ellie Poindexter, 1961
Oil on canvas
99.7 x 66.5 cm
39 1/4 x 26 1/4 in



Ellie Poindexter, 1962
Oil on canvas
76.2 x 61 cm
30 x 24 1/8 in



Matilda, 1958
Oil on canvas
61 x 40.6 cm
24 x 16 in



Matilda, 1957
Oil on canvas
91.4 x 55.9 cm
36 x 22 in



Julian Brody, 1950
Oil on canvas
68.6 x 45.7 cm
27 x 18 in



Julian Brody, 1955
Oil on canvas
81.3 x 45.7 cm
32 x 18 in



Hartley with a Cat, 1969
Oil on canvas
101.9 x 76.5 cm
40 1/8 x 30 1/8 in



Hartley, c. 1947
Oil on board
41 x 30 cm
16 1/8 x 11 3/4 in

Alice Neel: *There's Still Another I See*

11 OCTOBER–12 NOVEMBER 2022

Victoria Miro · 16 Wharf Road · London N1 7RW

VICTORIA MIRO GALLERY II



Sam Reclining, 1941
Oil on canvas
50.8 x 71.1 cm
20 x 28 in



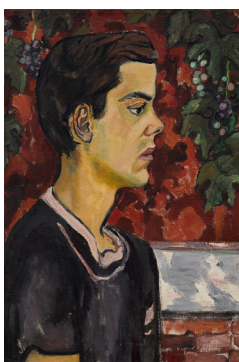
Sam in Checkered Shirt, 1952
Oil on canvas
91.4 x 66 cm
36 x 26 in



José with Guitar, 1936
Oil on canvas
56.5 x 51 cm
22 1/4 x 20 1/8 in



José, 1966
Oil on canvas
122.6 x 76.5 cm
48 1/4 x 30 1/8 in



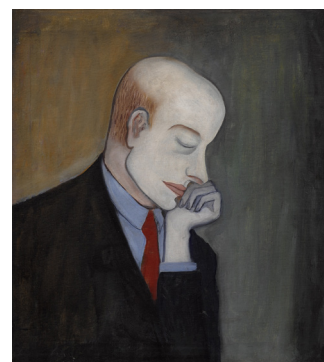
Richard, 1952
Oil on canvas
66 x 45.7 cm
26 x 18 in



Richard, 1980
Oil on canvas
111.8 x 76.2 cm
44 x 30 in



John with Bowl of Fruit, 1949
Oil on canvas
76.2 x 61 cm
30 x 24 in



John, 1933
Oil on canvas
66 x 59 cm
26 x 23 1/4 in