

Paula Rego: *The Forgotten*

19 NOVEMBER 2021–12 FEBRUARY 2022
Victoria Miro · 16 Wharf Road · London N1 7RW

GALLERY I | GROUND FLOOR



She Doesn't Want It, 2007
Graphite and conté pencil
on paper
137 x 102 cm
54 x 40 1/8 in



*Reading the Divine Comedy
by Dante*, 2005
Pastel on paper on
aluminium
180 x 120 cm
70 7/8 x 47 1/4 in



La Marafona, 2005
Pastel on paper on
aluminium
187 x 135 cm
73 5/8 x 53 1/8 in



The Fisherman, 2005
Pastel on paper on
aluminium
180 x 120 cm
70 7/8 x 47 1/4 in



Grief, 2015
Pastel on paper on aluminium
119.2 x 160.2 cm
46 7/8 x 63 1/8 in



Girl on a Large Armchair,
2000
Wax crayon and
watercolour on mylar
80 x 58 cm
31 1/2 x 22 7/8 in



Nursing, 2000
Wax crayon and
watercolour on mylar
80.5 x 60 cm
33 5/8 x 23 5/8 in



The Frotter, 2000
Wax crayons, graphite and
watercolour on mylar
80.5 x 56.8 cm
33 5/8 x 22 3/8 in



Convulsion IV, 2000
Wax crayon and
watercolour on mylar
80.5 x 61 cm
31 3/4 x 24 1/8 in

Paula Rego: *The Forgotten*

19 NOVEMBER 2021–12 FEBRUARY 2022
Victoria Miro · 16 Wharf Road · London N1 7RW

GALLERY I | UPPER FLOOR



Depression No. 1, 2007
Pastel on paper
68.6 x 101 cm
27 1/8 x 39 3/4 in



Depression No. 2, 2007
Pastel on paper
68.5 x 101 cm
27 x 39 3/4 in



Depression No. 3, 2007
Pastel on paper
107 x 78 cm
42 1/8 x 30 3/4 in



Depression No. 4, 2007
Pastel on paper
101.5 x 68.5 cm
40 x 27 in



Depression No. 5, 2007
Pastel on paper
101.5 x 68.5 cm
40 x 27 in



Depression No. 6, 2007
Pastel on paper
101.5 x 67 cm
40 x 26 3/8 in



Depression No. 7, 2007
Pastel on paper
101.5 x 68.5 cm
40 x 27 in



Depression No. 8, 2007
Pastel on paper
101.5 x 68.5 cm
40 x 27 in



Depression No. 9, 2007
Pastel on paper
68.5 x 101.5 cm
27 x 40 in



Depression No. 10, 2007
Pastel on paper
64.5 x 80 cm
25 3/8 x 31 1/2 in



Depression No. 11, 2007
Pastel on paper
100.5 x 68.5 cm
39 5/8 x 27 in

Paula Rego: *The Forgotten*

19 NOVEMBER 2021–12 FEBRUARY 2022
Victoria Miro · 16 Wharf Road · London N1 7RW

GALLERY II



Sick of it All, 2013
Watercolour on paper
50.2 x 35.6 cm
19 3/4 x 14 1/8 in



Misericordia I (Pedro Galdos), 2001
Pen, ink and watercolour
on paper
41.9 x 59.4 cm
16 1/2 x 23 3/8 in



Misericordia II, 2001
Pen, ink and watercolour
on paper
41.9 x 59.4 cm
16 1/2 x 23 3/8 in



Misericordia III, 2001
Pen, ink and watercolour
on paper
41.9 x 59.4 cm
16 1/2 x 23 3/8 in



Misericordia IV, 2001
Pen, ink and watercolour
on paper
41.9 x 59.4 cm
16 1/2 x 23 3/8 in



Misericordia V, 2001
Pen, ink and watercolour
on paper
41.9 x 59.4 cm
16 1/2 x 23 3/8 in



Misericordia VI, 2001
Pen, ink and watercolour
on paper
41.9 x 59.4 cm
16 1/2 x 23 3/8 in



Misericordia VII, 2001
Pen, ink and watercolour
on paper
41.9 x 59.4 cm
16 1/2 x 23 3/8 in

Paula Rego: *The Forgotten*

19 NOVEMBER 2021–12 FEBRUARY 2022
Victoria Miro · 16 Wharf Road · London N1 7RW

GALLERY II



Self Portrait I, 2017
Pastel on paper
59 x 42 cm
23 1/4 x 16 1/2 in



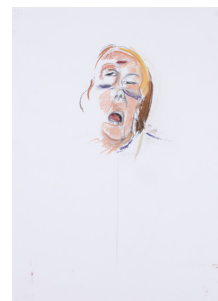
Self Portrait II, 2017
Pastel on Paper
59 x 42 cm
23 1/4 x 16 1/2 in



Self Portrait III, 2017
Pastel on paper
59 x 42 cm
23 1/4 x 16 1/2 in



Self Portrait V, 2017
Pastel on paper
42 x 30 cm
16 1/2 x 11 3/4 in



Self Portrait IV, 2017
Pastel on paper
59 x 42 cm
23 1/4 x 16 1/2 in



Sophia's Friends, 2017
Pastel on paper on aluminium
110 x 130.2 cm
43 1/4 x 51 1/4 in



The Guardian, 2012
Pastel on paper
160 x 120 cm
63 x 47 1/4 in



Flayed, 2012
Pastel on paper on aluminium
130.3 x 120.6 cm
51 1/4 x 47 1/2 in



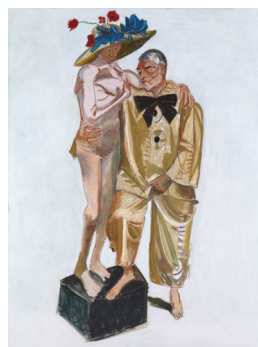
Rape, 2009
Pastel, conté and charcoal
on paper
125.1 x 85.4 cm
49 1/4 x 33 5/8 in



*Get Out of Here You and
Your Filth*, 2013
Pastel on paper on aluminium
120 x 160 cm
47 1/2 x 63 in



Revenge, 2011
Pastel on paper on
aluminium
101 x 136.5 cm
39 3/4 x 53 3/4 in



The Last Feed, 2012
Pastel on paper on
aluminium
159.7 x 120 cm
62 7/8 x 47 1/4 in