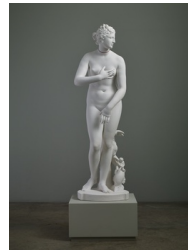


Ian Hamilton Finlay | 1789 – 1794, 10 June – 31 July 2015

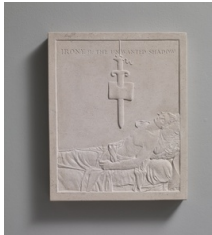
Gallery I, Lower Level Clockwise from entrance



*The Sound of Running Water*, 1990  
Stone wall, with Nicholas Sloane  
60 x 1092 x 20 cm, 23 5/8 x 429 7/8 x 7 7/8 in



*Aphrodite of the Terror*, 1987  
Plaster  
163 x 54 x 48 cm 64 1/8 x 21 1/4 x 18 7/8 in



*Irony, n. The unwanted shadow*, 1991  
Stone, with Neil Talbot  
68.5 x 55.5 x 7.5 cm 27 x 21 7/8 x 3 in

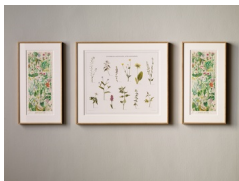


*Head of the Dead Marat*, 1991  
Stone, with Neil Talbot  
68.5 x 55.5 x 8 cm 27 x 21 7/8 x 3 1/8 in



*Translation of a Line from Chénier: A Line of Thin Pale Red*, 1989  
Neon  
15 x 140 x 8 cm 5 7/8 x 55 1/8 x 3 1/8 in

Gallery I, Upper Level Clockwise from entrance



*Triptychon*, 1992 / 2004  
Central panel: *Les Femmes de la Revolution after Anselm Kiefer*, 1992  
Lithograph, with Gary Hincks  
70 x 82 cm 27 1/2 x 32 1/4 in  
Side panels: *Horloge de Flore*, 2004  
Inkjet print on Japanese paper, with Gyorgy Olajos  
30.8 x 70 cm 12 1/8 x 27 1/2 in



*Republic*, 1995  
Painted watering cans, wooden drums  
Dimensions variable



*Apollo and Daphne*, 1992  
Wall painting, with Les Edge  
Dimensions variable



*The Names of the Twelve*, 2005 - 2006  
Slate with ceramic (maquette)  
35 x 136 x 76 cm 13 3/4 x 53 1/2 x 29 7/8 in



*12/1794*, 1994  
Ceramic candlesticks, wooden stools, with Katherine and Candida Ballantyne and Caroline Webb  
Dimensions variable



*1794, A Beheading of Bouquets*, 1987  
Stone, with Richard Grasby  
30 x 81 x 11.5 cm 11 3/4 x 31 7/8 x 4 1/2 in



*Four Blades*, 1987  
Slate plates, with Nicholas Sloane  
Dimensions variable