

## Surface Work

Victoria Miro, 16 Wharf Road, London N1 7RW  
11 April – 19 May 2018

Exhibition continues in Mayfair, 14 St George Street, London W1S 1FE  
11 April – 16 June 2018

### Ground Floor



**Mary Weatherford**  
*small Coney green light, 2017*  
Flashe and neon on linen  
61.6 x 50.8 x 2.5 cm  
24 1/4 x 20 x 1 in



**Katy Moran**  
*MT2, 2017*  
Acrylic on board with found frame  
87 x 62 cm  
34 1/4 x 24 3/8 in



**Fiona Rae**  
*Sleeping Beauty will hum about mine ears, 2017*  
Oil on canvas  
183 x 129.5 cm  
72 x 51 in



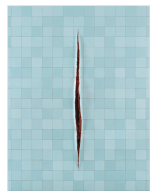
**Sara Barker**  
*unnatural council hands in cold looked blue, 2017*  
Jesmonite, automotive paint and stainless steel rod  
211 x 73 x 67 cm  
83 x 28 5/8 x 26 3/8 in



**Sarah Cain**  
*Moonlight, 2011*  
Acrylic, canvas, beads, string, silver leaf and stretcher bars  
194.3 x 121.9 cm  
76 1/2 x 48 in



**Rita Ackermann**  
*non-dairy creamer, 2013*  
Oil on vellum  
136.5 x 91.4 cm (53 3/4 x 36 in)  
Framed 140.5 x 96.5 x 3.9 cm (55 3/8 x 38 x 1 1/2 in)



**Adriana Varejão**  
*Parede con Incisão a la Fontana 3, 2002*  
Oil on canvas and polyurethane on aluminium and wood  
260 x 195 cm  
102 3/8 x 76 3/4 in



**Angela de la Cruz**  
*Deflated IV (White), 2009*  
Oil on canvas  
approx. 153 x 180 cm  
60 1/4 x 70 7/8 in



**Lucy Dodd**  
*Beyond Blind (1981 1/2), 2013*  
Foss leaf extract, sumac extract, black lichen, yerba maté, graphite, Bub's urine, anatto, and mixed pigments on canvas  
297.2 x 297.2 cm  
117 1/8 x 117 1/8 in



**Dala Nasser**  
*It's Only A Party if You Sniff It, 2016*  
Marble dust, trauma blankets and liquid latex  
240 x 220 cm  
94 1/2 x 86 5/8 in



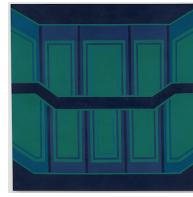
**Jessica Warboys**  
*Sea Painting, Dunwich, 2014*  
Mineral pigment, canvas  
345 x 197 cm  
135 7/8 x 77 1/2 in

# Victoria Miro

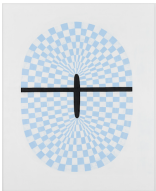
## First Floor



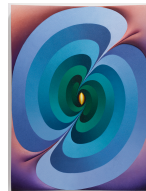
**Annie Morris**  
*Stack 10, Copper Blue*, 2018  
 Foam core, pigment, concrete, metal,  
 plaster, sand  
 H-266cm (including base); W-variable  
 Base 30 x 30 x 40 cm



**Tess Jaray**  
*Castle Blue*, 1962  
 oil on canvas  
 152.4 x 182.9 cm  
 60 x 72 in



**Raphaella Simon**  
*Winter-Ei*, 2018  
 Oil on canvas  
 200 x 160 cm  
 78 3/4 x 63 in



**Loie Hollowell**  
*Link Lingam (yellow, green, blue, purple, pink)*, 2018  
 Oil with molding paste and high density foam on linen over panel  
 121.9 x 91.4 x 8.9 cm  
 48 x 36 x 3 1/2 in



**Yuko Shiraishi**  
*Locking Together*, 2011  
 Oil on canvas  
 137 x 122 cm  
 54 x 48 1/8 in



**Bharti Kher**  
*Neurons and noise*, 2015  
 Bindis on painted board  
 198 x 198 cm (78 x 78 in)  
 Framed 203.3 x 203.3 x 8.7 cm  
 (80 x 80 x 3 3/8 in)



**Mildred Thompson**  
*String Theory 6*, 1999  
 Oil on canvas  
 182.9 x 127 cm  
 72 1/8 x 50 in



**Etel Adnan**  
 Untitled, 2015  
 Oil on canvas  
 41 x 32 cm (6 1/8 x 12 1/2 in)  
 Framed 47.3 x 38.1 x 4.4 cm  
 (18 5/8 x 15 x 1 3/4 in)



**Lynda Benglis**  
*TRES (SHY FIVE)*, 2016  
 Cast glitter on handmade paper over chicken wire  
 137.2 x 27.9 x 38.1 cm  
 54 1/8 x 11 x 15 in



**Rebecca Morris**  
 Untitled, 2017  
 Oil on canvas  
 175.26 x 177.8 cm  
 69 x 70 in



**Elizabeth Murray**  
*Maybe True*, 1998  
 Oil on canvas  
 274.3 x 229.9 cm  
 108 x 90 1/2 in



**Mary Heilmann**  
*Idriss*, 2012  
 Oil on wood panel  
 61 x 76 cm  
 24 x 29 7/8 in