

Yayoi Kusama

25 May – 30 July 2016

Victoria Miro, Gallery I & II and Waterside Garden · 16 Wharf Road · London N1 7RW

Victoria Miro MAYFAIR · 14 St George Street · London W1S 1FE

#YayoiKusama #InstaKusama

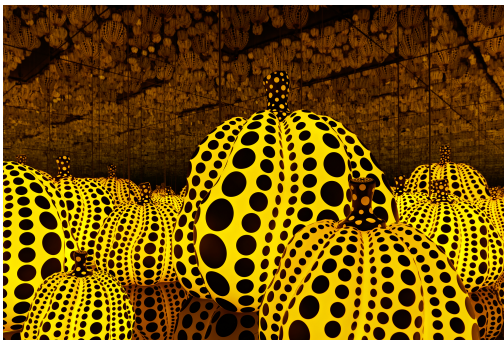
Gallery I, Lower floor



Chandelier of Grief, 2016

Steel, aluminium, one-way mirror, acrylic, chandelier motor, plastic, LED
353.8 x 556.3 x 481.8 cm 139 1/4 x 219 1/8 x 189 3/4 in

Gallery I, Upper floor



All the Eternal Love I Have for the Pumpkins, 2016

Wood, mirror, plastic, acrylic, LED
292.4 x 415 x 415 cm 115 1/8 x 163 3/8 x 163 3/8 in



Pumpkin, 2016

Mirror polished bronze

Left to right:

(M) 105 x 90 cm 41 3/8 x 35 3/8 in
(L) 152 x 120 cm 59 7/8 x 47 1/4 in
(S) 68 x 65 cm 26 3/4 x 25 5/8 in

Waterside Garden



Where the Lights in My Heart Go, 2016
Stainless steel, aluminium
300 x 300 x 300 cm 118 1/8 x 118 1/8 x 118 1/8 in

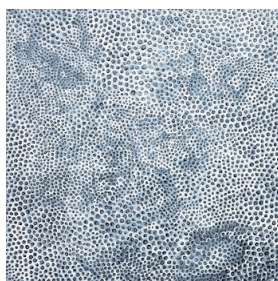


Narcissus Garden, 1966 -
873 stainless steel spheres
Each 30 cm

Gallery II



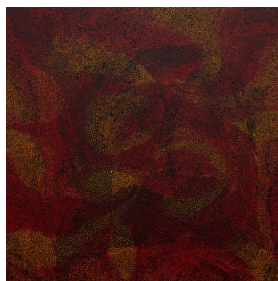
INFINITY-NETS [URKS], 2015
Acrylic on canvas
162 x 162 cm 63 3/4 x 63 3/4 in



INFINITY-NETS, 2016
Acrylic on canvas
162 x 162 cm 63 3/4 x 63 3/4 in



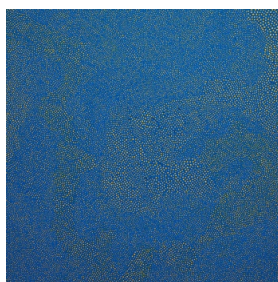
INFINITY-NETS [KUPP], 2016
Acrylic on canvas
97 x 130.3 cm 38 1/4 x 51 1/4 in



THE SETTING SUN, 2016
Acrylic on canvas
145.5 x 145.5 cm 57 1/4 x 57 1/4 in



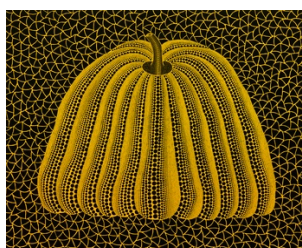
WHITE NETS INFINITY, 2016
Acrylic on canvas
194 x 194 cm 76 3/8 x 76 3/8 in



INFINITY-NETS, 2016
Acrylic on canvas
162 x 162 cm 63 3/4 x 63 3/4 in



INFINITY-WHITE NETS, 2016
Acrylic on canvas
130.3 x 194 cm 51 1/4 x 76 3/8 in



PUMPKIN [XAQ], 2016
Acrylic on canvas
130.3 x 162 x 7 cm
51 1/4 x 63 3/4 x 2 3/4 in