

## Surface Work

Victoria Miro, 14 St George Street, London W1S 1FE  
11 April – 16 June 2018

Exhibition continues in 16 Wharf Road, London N1 7RW  
11 April – 19 May 2018

### Gallery I



**Paule Vézelay**  
*Silhouettes*, 1938  
Oil on canvas  
91.4 x 59.7 cm  
36 x 23 1/2 in



**Lee Krasner**  
*The Farthest Point*, 1981  
Oil and paper collage on canvas  
144.1 x 94.6 cm



**Betty Parsons**  
*End of Winter*, 1958-59  
Oil on canvas  
95.5 x 93.66 cm  
37 5/8 x 36 7/8 in



**Helen Frankenthaler**  
*Winter Figure with Black Overhead*, 1959  
Oil on sized primed canvas  
84 x 53 inches  
213.4 x 134.6 cm



**Alma Thomas**  
Untitled, 1961  
oil on canvas  
101.6 x 81.3 cm  
40 x 32 1/8 in

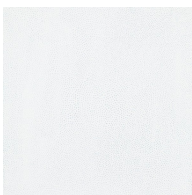


**Howardena Pindell**  
Untitled, 1971  
Acrylic on canvas  
165.1 x 168.3 cm  
65 x 66 1/4 in



**Hedda Sterne**  
*Vertical Horizontal #7 1/2*, 1963  
Oil on canvas  
182.9 x 137.2 cm  
72 1/8 x 54 1/8 in

### Gallery II



**Yayoi Kusama**  
*INFINITY-NETS (HNBKU)*, 2012  
Acrylic on canvas  
162 x 162 cm  
63 3/4 x 63 3/4 in



**Agnès Martin**  
Untitled, 1995  
Pencil and ink on paper  
27.9 x 27.9 cm  
11 x 11 in

# Victoria Miro



**Jay DeFeo**  
*White Water*, 1989  
Oil on linen  
41 x 30.5cm



**Adriana Varejão**  
*Azulejão (Moon)*, 2018  
Oil and plaster on canvas  
180 x 180 cm  
70 7/8 x 70 7/8 in



**Mira Schendel**  
Untitled, ca. 1970  
Crayon and Ecoline on paper  
48 x 33 cm / 18 7/8 x 13 inches  
54.9 x 39.8 x 3.5 cm / 21 5/8 x 15 5/8 x 1 3/8 inches (framed)

## Gallery III



**Lygia Clark**  
*Planos em Superfície Modulada*, 1957  
Gouache, graphite, cardboard  
Unframed: 25 x 35 cm - 9 7/8 x 13 3/4 ins  
Framed: 67.3 x 77.2 x 3.8 cm - 26 1/2 x 30 3/8 x 1 1/2 ins



**Svenja Deininger**  
Untitled, 2018  
Oil on canvas  
96 x 118 cm  
37 3/4 x 46 1/2 in



**Svenja Deininger**  
Untitled, 2018  
Oil on canvas  
70 x 65 cm  
27 1/2 x 25 5/8 in



**Liubov Popova**  
*Non-Objective Composition*, c.1920  
Gouache, oil and india ink on cardboard  
45.6 x 28.3 cm  
18 x 11 1/8 in



**Dorothea Rockburne**  
*Parallelogram with two small squares (from Vellum Curve series)*, 1978  
Mixed media, vellum, pencil, glue and varnish  
42 1/2 x 32 1/2 inches  
108 x 82.6 cm



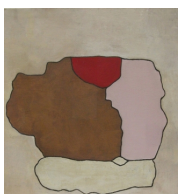
**Suzanne Blank Redstone**  
*After Piero Della Francesca - The Flagellation of Christ*, 1967  
Acrylic on masonite  
76.2 x 122 cm  
30 x 48 in



**Ilse D'Hollander**  
*Untitled (306)*, 1995  
Oil on canvas  
55 x 71 cm  
21 5/8 x 28 in



**Ilse D'Hollander**  
*Untitled (292)*, 1995  
Oil on canvas  
48 x 54 cm  
18 7/8 x 21 1/4 in



**Prunella Clough**  
*Stone*, 1985  
oil on canvas  
81 x 76 cm



**Betty Blayton**  
*Hard Edge # 3 - Intermezzo*, 1969  
oil on canvas  
40.25 x 40.25 inch  
102.235 x 102.235 cm

# Victoria Miro

## Reception



**Mary Ramsden**  
*Mama Lion*, 2017  
Oil on panel  
Each panel measures: 40 x 30 x 3.5 cm  
15 3/4 x 11 3/4 x 1 3/8 in



**Liubov Popova**  
Untitled, c.1918  
Ink on paper  
23 x 14.5 cm  
9 1/8 x 5 3/4 in

## Office



**Lygia Clark**  
*Planos em Superficie Modulada*, 1957  
Gouache, graphite and cardboard  
25 x 35 cm (9 7/8 x 13 3/4 in)  
Framed 57.3 x 67.6 x 3.8 cm (22 1/2 x 26 5/8 x 1 1/2 in)



**Prunella Clough**  
*Equinox*, 1947  
Oil on canvas  
40.5 x 25.5 cm  
16 x 10 1/8 in



**Tess Jaray**  
Untitled, 1962  
Oil paint on paper  
14.6 x 11.6 cm | 5 3/4 x 4 5/8 in



**Tess Jaray**  
Untitled, 1962  
Oil paint on paper  
14 x 11 cm  
5 1/2 x 4 3/8 in



**Tess Jaray**  
Untitled [*Study Towards 'Castle Green'*], 1962  
Oil paint on paper  
14.5 x 10.6 cm | 5 3/4 x 4 1/8 in



**Tess Jaray**  
Untitled, 1962  
Oil paint on paper  
12.1 x 11.6 cm | 4 3/4 x 4 5/8 in



**Tess Jaray**  
Untitled [*Study 2 Towards 'Castle Green'*], 1962  
Oil paint on paper  
15.2 x 11.2 cm  
6 x 4 3/8 in

## Windows



**Hedda Sterne**  
Untitled, 1982  
Acrylic and pastel on canvas  
113.7 x 161.9 cm  
44 3/4 x 63 3/4 in



**Tomie Ohtake**  
Untitled, 1987  
Acrylic on canvas  
150 x 150 cm  
59 1/8 x 59 1/8 in