

Milton Avery

7 June – 29 July 2017

Victoria Miro Mayfair, 14 St George Street, London W1S 1FE

All works listed clockwise from entrance

Gallery I



Dark Fir, 1962
Oil and oil crayon on canvas board
76.2 x 61 cm
30 x 24 in



Dark Tree, 1954
Mixed media on paper
63.5 x 48.3 cm
25 x 19 in



Young Couple (Husband and Wife), 1963
Oil on canvas
127 x 152.4 cm
50 x 60 in



Excursion on the Thames, 1952
Gouache and watercolour on paper
57.1 x 77.5 cm
22 1/2 x 30 1/2 in



Excursion on the Thames, 1953
Oil on canvas
101.6 x 127 cm
40 x 50 in



Vine, 1955
Oil on canvas
96.5 x 121.9 cm
38 x 48 in

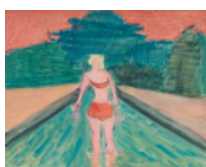


Grey Nude, 1943-44
Oil on canvas
91.4 x 50.8 cm
36 x 20 in



French Landscape, 1953
Oil on canvas
111.8 x 86.4 cm
44 x 34 in

Gallery II



Wader, 1963
Oil on canvas
61 x 76.2 cm
24 x 30 in



The South of France Sketchbook,
1952
Sketchbook
17.8 x 11.4 cm
7 x 4 1/2 in



Morning Sky, 1962
Oil on canvas
81.3 x 121.9 cm
32 x 48 in

Gallery III



Pale Fields, c. mid-late 1930s
Oil on canvas
66 x 83.8 cm
26 x 33 in



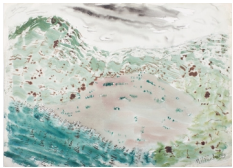
Musical Landscape, c. mid-late 1930s
Gouache on paper
45.7 x 61 cm
18 x 24 in



Seven White Cows, 1953
Oil on canvas
66 x 109.2 cm
26 x 43 in



Old Mountain, 1943
Watercolour on paper
55.9 x 76.2 cm
22 x 30 in



Spring Landscape, 1940
Watercolour on paper
55.9 x 76.2 cm
22 x 30 in



Three Cows, 1943
Watercolour on paper
55.9 x 76.2 cm
22 x 30 in