

Chris Ofili | to take and to give.
Victoria Miro 14 | From Left on entry of
staircase.



Chris Ofili
Hound (Study for Diana & Actaeon), 2012
Charcoal on paper
28.5 x 27.8 cm, 11 1/4 x 11 in



Chris Ofili
Hound (Study for Diana & Actaeon), 2012
Charcoal on paper
44 x 39.5 cm, 17 3/8 x 15 1/2 in



Chris Ofili
Hound (Study for Diana & Actaeon), 2012
Charcoal on paper
24.9 x 28.5 cm, 9 3/4 x 11 1/4 in



Chris Ofili
Hound (Study for Diana & Actaeon), 2012
Charcoal on paper
44.6 x 39.5 cm, 17 1/2 x 15 1/2 in



Chris Ofili
Hound (Study for Diana & Actaeon), 2012
Charcoal on paper
31.8 x 48.5 cm, 12 1/2 x 19 in



Chris Ofili
Hound (Study for Diana & Actaeon), 2012
Ink and photo collage on paper
79 x 52 cm, 31 1/8 x 20 1/2 in



Chris Ofili
Hound (Study for Diana & Actaeon), 2012
Ink and photo collage on paper
79 x 52.8 cm, 31 1/8 x 20 3/4 in



Chris Ofili
Hound (Study for Diana & Actaeon), 2012
Ink on paper
79 x 53 cm, 31 1/8 x 20 7/8 in



Chris Ofili
Hound (Study for Diana & Actaeon), 2012
 Ink and photo collage on paper
 79 x 52 cm, 31 1/8 x 20 1/2 in



Chris Ofili
Hound (Study for Diana & Actaeon), 2012
 Ink and photo collage on paper
 79 x 52.6 cm, 31 1/8 x 20 3/4 in



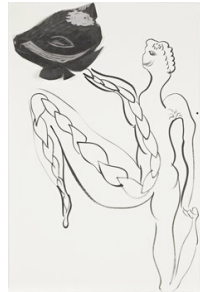
Chris Ofili
Hound (Study for Diana & Actaeon), 2012
 Ink and photo collage on paper
 79 x 51.7 cm, 31 1/8 x 20 3/8 in



Chris Ofili
Hound (Study for Diana & Actaeon), 2012
 Ink and photo collage on paper
 79 x 51.5 cm, 31 1/8 x 20 1/4 in



Chris Ofili
Hound (Study for Diana & Actaeon), 2012
 Ink and photo collage on paper
 79 x 52 cm, 31 1/8 x 20 1/2 in



Chris Ofili
Hound (Study for Diana & Actaeon), 2012
 Ink and photo collage on paper
 79 x 52.6 cm, 31 1/8 x 20 3/4 in



Chris Ofili
Hound (Study for Diana & Actaeon), 2012
 Ink and photo collage on paper
 79 x 52 cm, 31 1/8 x 20 1/2 in



Chris Ofili
Houndkeeper (Study for Diana & Actaeon), 2012
 Ink on paper
 79 x 52.6 cm, 31 1/8 x 20 3/4 in



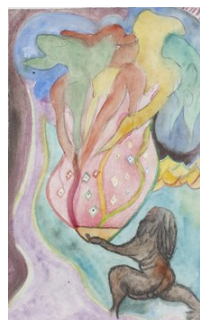
Chris Ofili
to take and to give, 2012
 Acrylic on canvas
 519 x 880 cm, 204 3/8 x 346 1/2 in



Chris Ofili
Study for Ovid-Windfall, 2012
 Watercolour, charcoal and pastel on paper
 48.5 x 31.5 cm, 19 x 12 3/8 in



Chris Ofili
Study for Ovid-Windfall, 2012
 Watercolour, charcoal and pastel on paper
 48.5 x 32 cm, 19 x 12 5/8 in



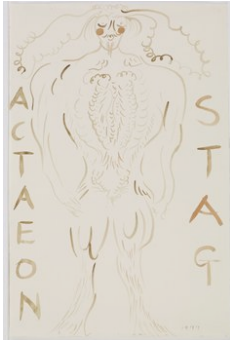
Chris Ofili
Study for Ovid-Windfall, 2012
 Watercolour, charcoal and pastel on paper
 48.5 x 31.5 cm, 19 x 12 3/8 in



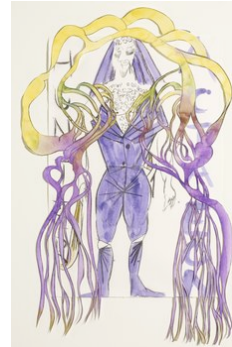
Chris Ofili
Study for Ovid-Windfall,
2012
Watercolour, charcoal and
pastel on paper
48.5 x 31.5 cm, 19 x 12
3/8 in



Chris Ofili
Study for Ovid-Windfall,
2012
Watercolour, charcoal and
pastel on paper
48.5 x 31.5 cm, 19 x 12
3/8 in



Chris Ofili
*Actaeon Stag (Study for
Diana & Actaeon)*, 2012
Watercolour on paper
79 x 52.7 cm, 31 1/8 x 20
3/4 in



Chris Ofili
*Actaeon (Study for Diana
& Actaeon)*, 2012
Watercolour and charcoal
on cut paper
102 x 63.5 cm, 40 1/8 x 25
in



Chris Ofili
*Diana (Study for Diana &
Actaeon)*, 2012
Watercolour and charcoal
on cut paper
103 x 74.5 cm, 40 1/2 x 29
3/8 in



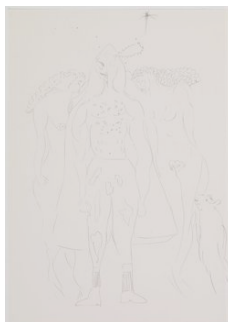
Chris Ofili
Study for Ovid-Desire,
2012
Ink on paper
79 x 52 cm, 31 1/8 x 20
1/2 in



Chris Ofili
*Diana (Study for Diana &
Actaeon)*, 2012
Pencil on paper
29.7 x 21 cm, 11 3/4 x 8
1/4 in



Chris Ofili
*Actaeon Hunter (Study for
Diana & Actaeon)*, 2012
Pencil on paper
42 x 29.7 cm, 16 1/2 x 11
3/4 in



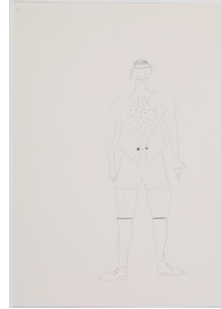
Chris Ofili
*Actaeon (Study for Diana
& Actaeon)*, 2012
Pencil on paper
42 x 29.7 cm, 16 1/2 x 11
3/4 in



Chris Ofili
*Actaeon Stag (Study for
Diana & Actaeon)*, 2012
Pencil and coloured pencil
on paper
42 x 29.7 cm, 16 1/2 x 11
3/4 in



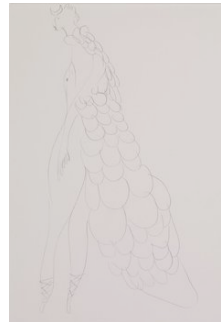
Chris Ofili
Hunter (Study for Diana & Actaeon), 2012
 Pencil on paper
 42 x 29.7 cm, 16 1/2 x 11 3/4 in



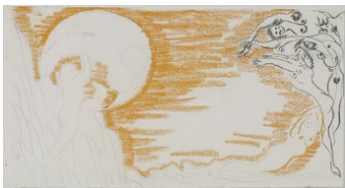
Chris Ofili
Hunter (Study for Diana & Actaeon), 2012
 Pencil on paper
 42 x 29.7 cm, 16 1/2 x 11 3/4 in



Chris Ofili
Hunter (Study for Diana & Actaeon), 2012
 Pencil on paper
 42 x 29.7 cm, 16 1/2 x 11 3/4 in



Chris Ofili
Diana (Study for Diana & Actaeon), 2012
 Pencil on paper
 29.7 x 21 cm, 11 3/4 x 8 1/4 in



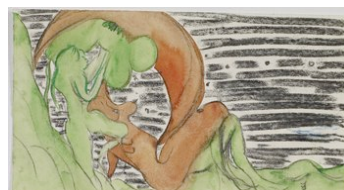
Chris Ofili
Backcloth (Study for Diana & Actaeon), 2011
 Pencil, charcoal and pastel on paper
 22.5 x 42 cm, 8 7/8 x 16 1/2 in



Chris Ofili
Backcloth (Study for Diana & Actaeon), 2011
 Charcoal and pastel on paper
 22 x 41.8 cm, 8 5/8 x 16 1/2 in



Chris Ofili
Backcloth (Study for Diana & Actaeon), 2011
 Charcoal, pastel and watercolour on paper
 22.3 x 42.5 cm, 8 3/4 x 16 3/4 in



Chris Ofili
Backcloth (Study for Diana & Actaeon), 2011
 Charcoal and watercolour on paper
 23.2 x 42 cm, 9 1/8 x 16 1/2 in



Chris Ofili
Nymph (Study for Diana & Actaeon), 2012
 Charcoal on paper
 52 x 33.3 cm, 20 1/2 x 13 1/8 in



Chris Ofili
Nymph (Study for Diana & Actaeon), 2012
 Charcoal on paper
 29.7 x 51.7 cm, 11 3/4 x 20 3/8 in



Chris Ofili
Nymph (Study for Diana & Actaeon), 2011
Charcoal on paper
52 x 39.3 cm, 20 1/2 x 15 1/2 in



Chris Ofili
Nymph (Study for Diana & Actaeon), 2011
Charcoal on paper
52.3 x 39.4 cm, 20 5/8 x 15 1/2 in



Chris Ofili
Nymph (Study for Diana & Actaeon), 2012
Charcoal on paper
52 x 33.3 cm, 20 1/2 x 13 1/8 in



Chris Ofili
Nymph (Study for Diana & Actaeon), 2011
Charcoal on paper
34.5 x 39.7 cm, 13 5/8 x 15 5/8 in



Chris Ofili
Nymph (Study for Diana & Actaeon), 2011
Charcoal on paper
52.5 x 39.5 cm, 20 5/8 x 15 1/2 in



Chris Ofili
Nymph (Study for Diana & Actaeon), 2011
Charcoal on paper
51.7 x 39.5 cm, 20 3/8 x 15 1/2 in



Chris Ofili
Study for Ovid-Callisto, 2012
Watercolour and charcoal on paper
51.5 x 39.5 cm, 20 1/4 x 15 1/2 in



Chris Ofili
Study for Ovid-Jupiter, 2010-2012
Pastel and watercolour on paper
48.5 x 32 cm, 19 x 12 5/8 in