

## Forces in Nature *Curated by Hilton Als*

13 October – 14 November 2015

Victoria Miro · 16 Wharf Road · London N1 7RW

Anticlockwise from lift entrance



**Sarah Sze**  
*Model for a Weather Vane*, 2012  
Mixed media, stainless steel, wood, stone, acrylic paint, archival prints, lamps, clamps  
345.4 x 381 x 142.2 cm 136 x 150 x 56 in



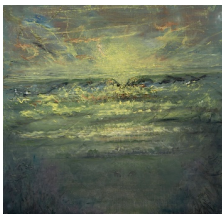
**Kara Walker**  
*Spectators*, 2014  
Ink, watercolour and cut paper on paper  
127 x 96.5 cm 50 x 38 in



**Celia Paul**  
*For Her*, 2015  
Oil on canvas  
55.9 x 63.5 cm 22 x 25 in



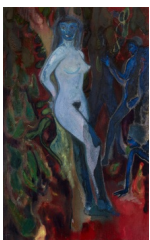
**Celia Paul**  
*Open Sea*, 2015  
Oil on canvas  
55.9 x 63.5 cm 22 x 25 in



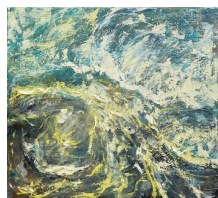
**Celia Paul**  
*St Brigid's Vision*, 2014-2015  
Oil on canvas  
112 x 117.2 x 7 cm  
44 1/8 x 46 1/8 x 2 3/4 in



**Peter Doig**  
*Spearfisher Man*, 2015  
Oil on vellum  
127 x 68.5 cm 50 x 27 in



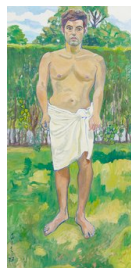
**Peter Doig**  
*Blue Nude*, 2015  
Oil on linen  
129 x 80 cm 50 3/4 x 31 1/2 in



**Celia Paul**  
*Retreating Wave*, 2015  
Oil on canvas  
55.9 x 63.5 cm 22 x 25 in



**Celia Paul**  
*Sea*, 2014  
Oil on canvas  
76.2 x 142.2 cm 30 x 56 in



**Alice Neel**  
*Richard*, 1973  
Oil on canvas  
203.2 x 96.5 cm 80 x 38 in



**Njideka Akunyili Crosby**  
*Cassava Garden*, 2015  
Acrylic, transfers, coloured pencils, charcoal and commemorative fabric on paper  
182.9 x 152.4 cm 72 x 60 in



**NS Harsha**  
*Surviving on blueberries from the inverted tree!*, 2012  
Watercolour and pencil on paper  
21 x 29.7 cm 8 1/4 x 11 3/4 in



**NS Harsha**  
*Peeping into levitating black hole!*,  
 2012  
 Watercolour and pencil on paper  
 21 x 29.7 cm 8 1/4 x 11 3/4 in



**Alice Neel**  
*Richard with Dog*, 1954  
 Oil on canvas  
 81.9 x 56.5 x 2.2 cm 32 1/4 x 22 1/4 x 7/8 in



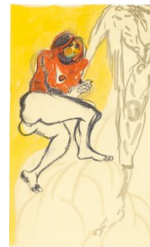
**Francesca Woodman**  
*Untitled, Providence, Rhode Island*,  
 1978 (P.144)  
 Gelatin silver estate print  
 20.3 x 25.4 cm 8 x 10 in



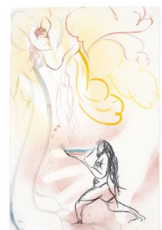
**Francesca Woodman**  
*Untitled, Providence, Rhode Island*, 1975-78 (P.106)  
 Gelatin silver estate print  
 20.3 x 25.4cm 8 x 10 in



**Verne Dawson**  
*Macedonia Road*, 2013  
 Oil on linen  
 182.9 x 4 x 213.4 cm 72 x 1.5 x 84 in



**Chris Ofili**  
*Study for Ovid-Jupiter*, 2010-2012  
 Oil, pastel and charcoal on paper  
 48.5 x 29 cm 19 x 11 3/8 in



**Chris Ofili**  
*Study for Ovid-Windfall*, 2012  
 Charcoal, watercolour and oil on paper  
 48.5 x 32 cm 19 x 12 5/8 in



**Tal R**  
*Man with Large Hat on Mighty*, 2015  
 Pigment and rabbit glue on canvas  
 280 x 170 cm 110 1/4 x 66 7/8 in



**Chris Ofili**  
*Study for Ovid-Jupiter*, 2010-2012  
 Ink, watercolour, charcoal and pastel  
 on paper  
 49.8 x 31.8 cm 19 5/8 x 12 1/2 in



**Chris Ofili**  
*Study for Ovid-Windfall*, 2012  
 Charcoal, watercolour and oil on paper  
 48.5 x 32 cm 19 x 12 5/8 in



**Verne Dawson**  
*Bi-plane*, 2013  
 Oil on linen  
 30.5 x 22.9 cm 12 x 9 in